



www.applied-maths.com

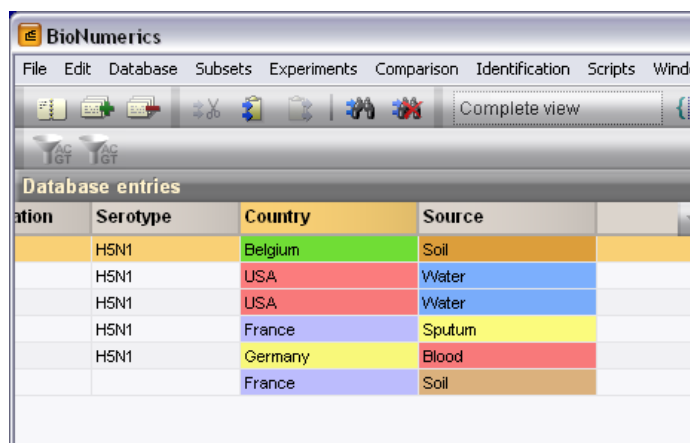
## GELCOMPAR II VERSION 5.1: RELEASE NOTE

Only 3 months after the release of GelCompar II version 5.0, Applied Maths presents a new upgrade with a number of additions and improvements.

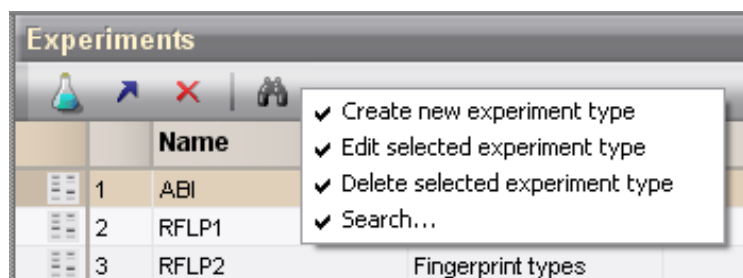
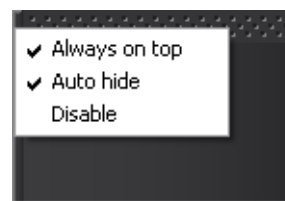
Explore the major new features in this upgrade! Below is a list of the new features.

### INTERFACE

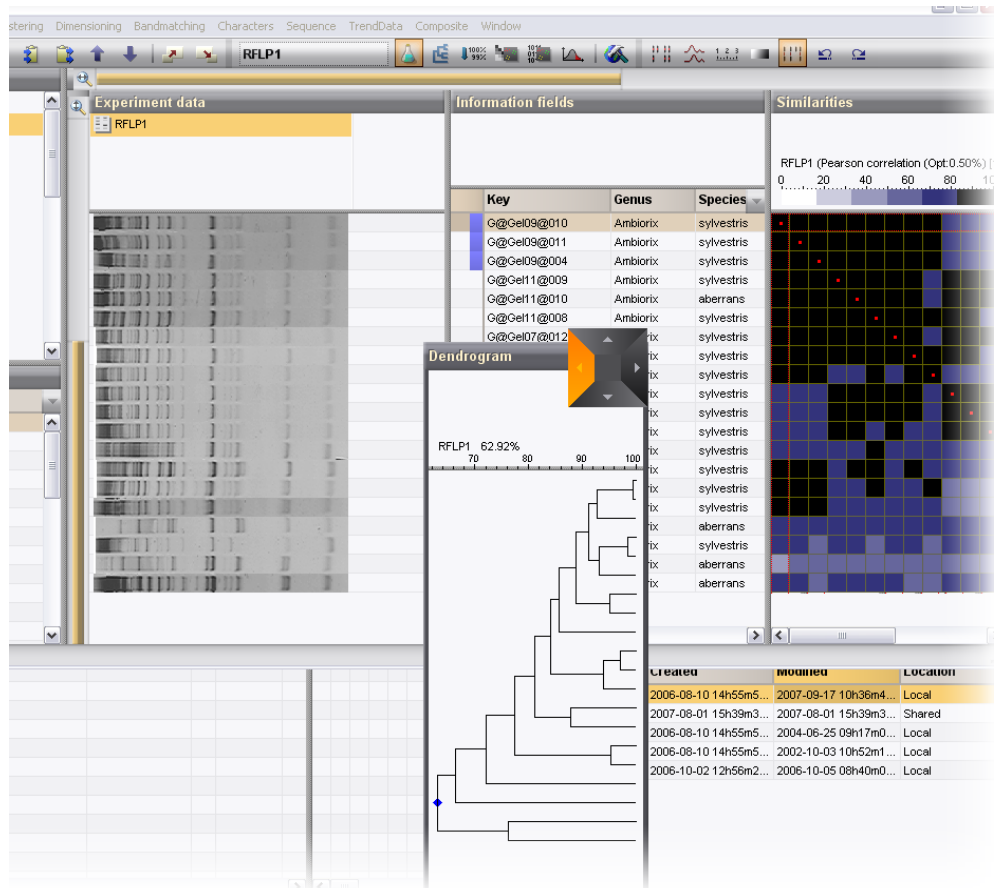
Information fields can be defined to contain "States": predefined information categories. States can be assigned different colors to facilitate visualizing and mining database content. States can be defined as fixed content to avoid typing error and to restrict database entry to predefined choices.



The navigator can easily be removed by a menu item in the header



Less used buttons can be hidden

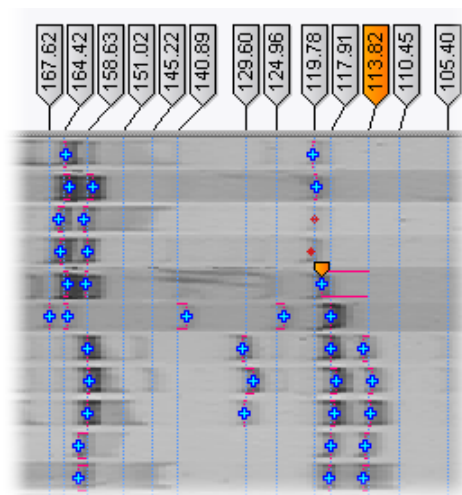


All panels in comparison window are now dockable

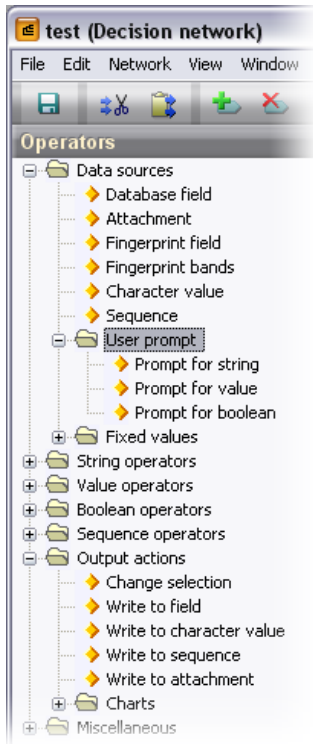
## THE COMPARISON WINDOW

**Band matching**

- Optimized visualization for matched and selected bands
- Drag & drop changing of band class



## IDENTIFICATION & DECISION NETWORKS



- New nodes for e.g. user prompt and attachments

## DIMENSIONING TECHNIQUES & STATISTICS

- New Colored bar graphs in the chart & statistics tool

